

## INSTALLATION INSTRUCTIONS UNIVERSAL 6 GALLON WATER HEATER REPLACEMENT KIT NO. 520787 and 520818

1. Shut off gas supply to existing water heater. Disconnect gas line.
2. Cut off all electrical power to water heater and disconnect.
3. Shut off water supply and disconnect water lines.
4. Remove existing water heater.
5. Seal existing holes in wall with silicone caulking.
6. Cut opening in coach wall to fit Suburban water heater. Opening must be 12 3/4 x 12 3/4.
7. Figure 1 illustrates a typical cut-out and also illustrates the modifications required for the Suburban SW6 Series water heater.  
The existing opening must be modified to a 12 3/4 x 12 3/4 opening. From center line of existing opening measure to the right and left 6 3/8". Measure from the bottom of the opening up 12 3/4".
8. Caulk the spacers as illustrated and attach to the back side of the frame.
9. Caulk around the opening (trailer skin) as illustrated.
10. Position water heater into opening as shown.
11. Lay a bead of silicone caulking (or suitable caulking) around the inner edge of the control housing (top, bottom and sides). See detail "A" in illustration. This will seal frame to control housing.
12. Apply a bead of silicone caulking (or suitable caulking) around back side of door frame. See detail "A" in illustration. This will seal frame to coach skin.
13. Fit the door frame into control housing (over the caulking already applied) and pull frame tight to control housing using the three (3) No. 8-15 x 3 1/2" screws provided.
14. Push water heater into framed opening until back side of door frame (now attached to control housing) and the spacers are firmly against the side of the coach and firmly attached with screws around the perimeter of the frame (including spacers). NOTE: The two (2) holes in bottom of frame identified as "A" in Figure 1 are also used to mount door hinge to the frame.
15. Attach door to frame as illustrated.  
Close the door so that the door latch protrudes through the slot in the door. Turn latch 90 degrees to fasten door.
16. Make gas, water and electrical connections following instructions contained in the manual supplied with the water heater.

Refer to the manual supplied with water heater for all other instructions including safety warnings.

ILLUSTRATION ON BACK

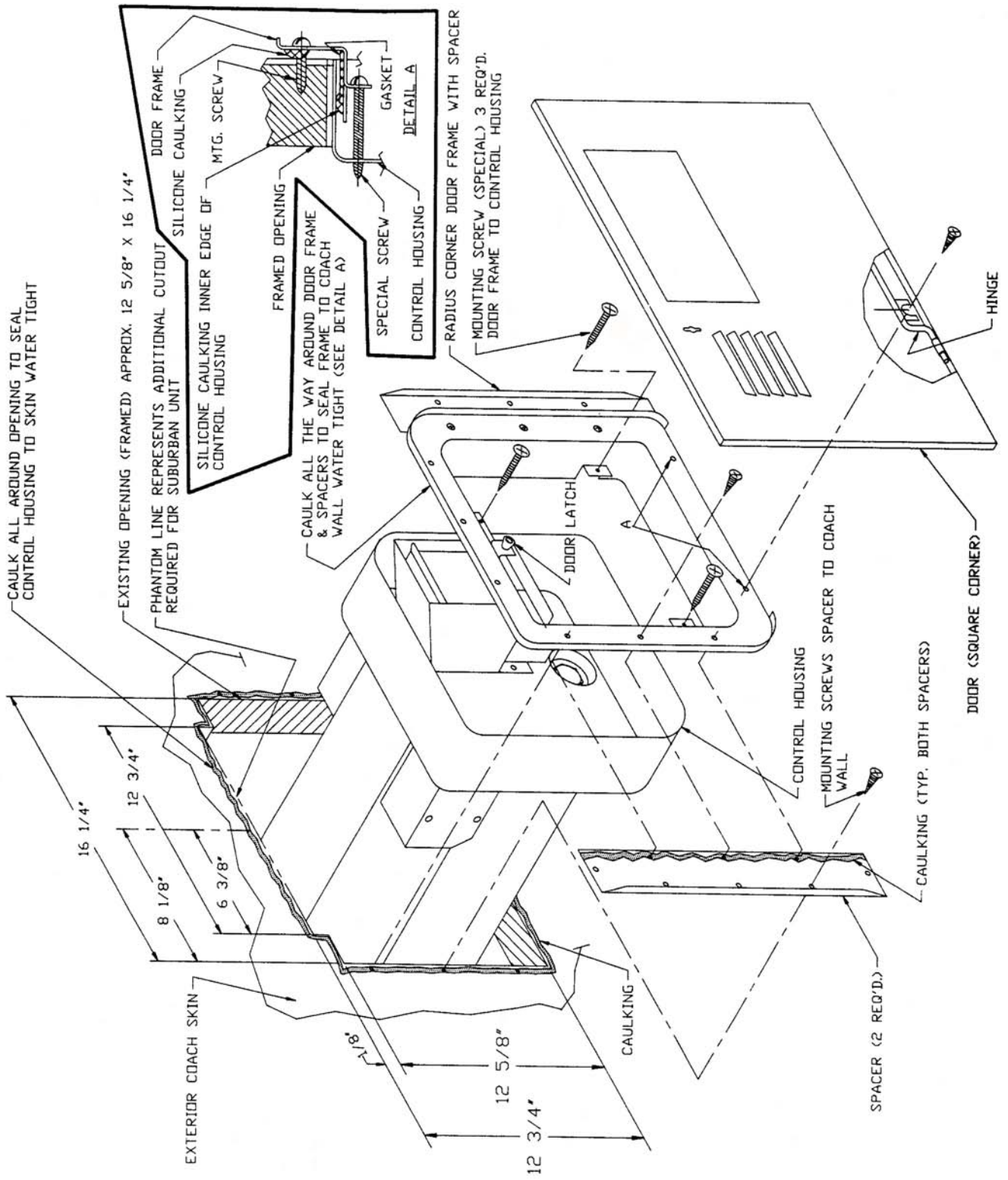


Figure 1